



The Premium 10K Conversion Kit is a simple solution that uses our field tested VTS-100 10K Washpipe Packing Assembly in place of the XK90/100 washpipe hydraulically balanced upgrade. Our conversion kit is easily installed with a simple adapter ring and utilizes existing industry standard parts to transition to the VTS-100 10K washpipe cartridge system.

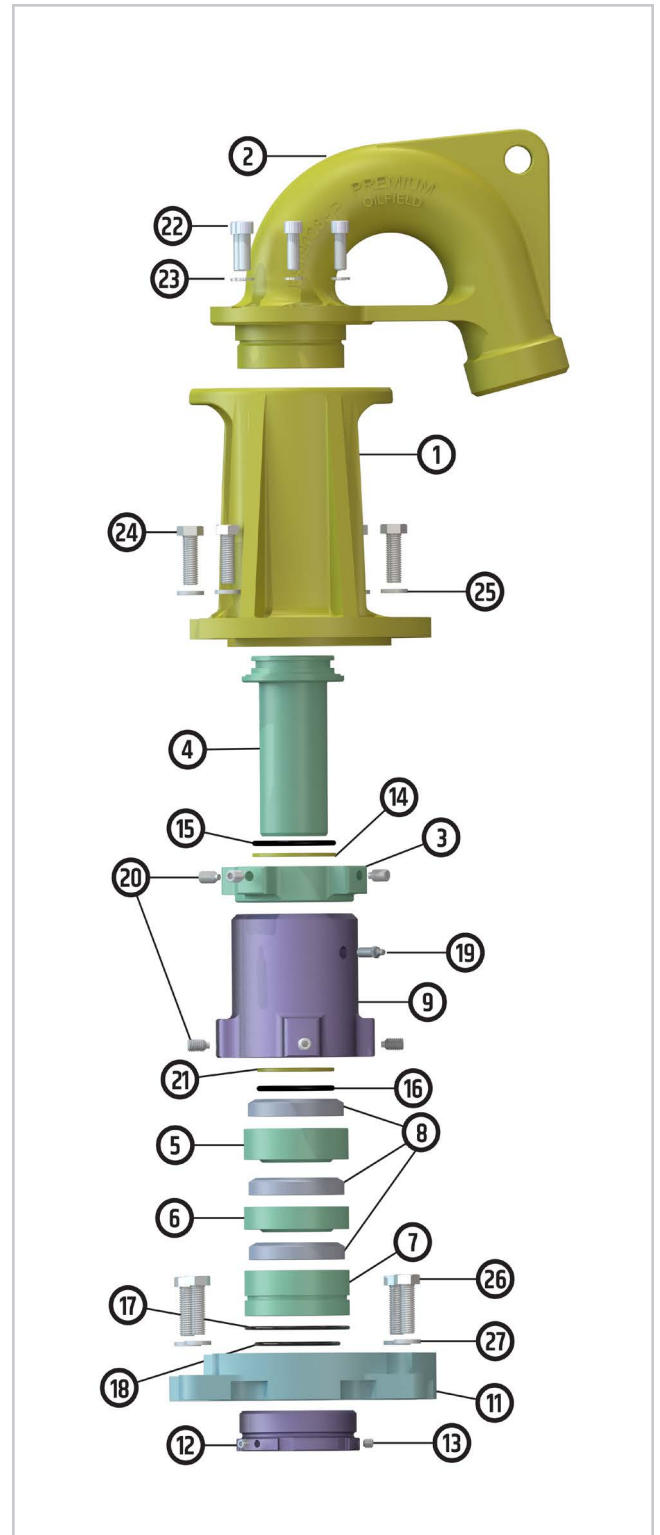
## BENEFITS

- ◆ Simple design can be rebuilt in the field.
- ◆ Does not require hydraulics.
- ◆ Washpipe, washpipe packing, packing rings, gooseneck and all parts except packing box, adapter ring and Bonnet Adapter are the same as VTS-100 to reduce inventory costs.
- ◆ Fleets with VTS-100 and XK90/100 swivels can now standardize on one washpipe cartridge system.

# VTS-100 Washpipe 10K Upgrade Kit

Item #	Part #	Description	Qty
	402-0006	XK 10K Conversion Kit (items 1 - 27)	1
1	PS19028	Bonnet	1
2	PS09028HP	HP Gooseneck	1
	402-0006-1	Washpipe Packing Assembly (items 3 - 9)	
3	PS1001-1	Upper Packing Nut	1
4	PS1001-3	Washpipe	1
5	PS1001-4	Upper Seal Carrier	1
6	PS1001-5	Middle Seal Carrier	1
7	PS1001-6	Lower Seal Carrier	1
8	PS1001-7	Washpipe Packing	3
9	402-0004	Lower Packing Nut	1
10	402-0005	Spanner Wrench*	1
11	402-0002	Bonnet Adaptor	1
12	402-0003	Adapted Ring	1
13	601-0520	3/8"-16 x 3/8 Lg Set Screw	3
14	SE-0287	Back-Up Ring	1
15	568337-200	O-Ring	1
16	568335-200	O-Ring	1
17	568242-200	O-Ring	1
18	568236-200	O-Ring	1
19	GF125-1250	Grease Fitting 1/8" NPT	1
20	PS50732-003	1/2 Set Screw	8
21	SE-0288	Back-Up Ring	4
22	ACSA8-500-13-150	1/2"- 13 x 1-1/2" Long Socket Head Screw	4
23	NLWA-500	1/2" Nord-Lock Washer	6
24	HCSA8-625-11--175	5/8"- 11 x 1-3/4" Long Hex Head Screw	6
25	LKWAHD-625	5/8" High Collar Lock Washer	4
26	ACSA8-625-11-175	Socket Head Cap Screw, 5/8"-11 x 1-3/4	4
27	LKWAHD-625	5/8" High Collar Lock Washer	4

\*not shown



Premium Oilfield  
Technologies  
Q1-3977

Premium Oilfield Technologies  
10600 W. Sam Houston Pkwy North  
Houston, Texas 77064  
281.670.5200 ♦ [premiumoilfield.com](http://premiumoilfield.com)